

DVR

8/16-channel Digital Video Recorder

Manual



Security Notice

- **Power supply**

This Digital-Video-Recorder applies DC 12 voltage indoor power supply. The voltage of the power must be verified before using.

When the machine is not in use for a long time, pull out the plug from the socket and disconnect the power.

- **Security**

This machine is indoor using equipment; in order to avoid dangers of short circuit or electric shock, please do not expose the machine in rain or moist environment. In case any solid or liquids get into the machine's case, please cut off the power supply immediately, and ask for qualified technicians to check the machine before restart.

This machine is precise instrument; do not attempt to repair any unit of the machine by yourself without technical aid. When there is any malfunction with the machine, please ask for qualified technicians to examine and repair, or contact the dealers in your area.

- **Installation**

Please choose appropriate site to install the machine, to ensure well ventilation around the machine to avoid the machine excessively hot. The machine cannot be installed near radiator and ventilating trunk etc. heat sources, or under direct sunshine, or dusty places or anywhere there is a chance for mechanical librations or impact.

- **Advice**

While recording TV programs or VCD programs, please don't pirate the third-party's authority and/or any other relative rights.

Features of this DVR

- Video input: 16channels; video output: 3 channels.
- Audio input: 4channels; audio output: 1 channels.
- Four optional levels of image quality: very high, high, normal, low. Record and playback frame rate changeable for recording.
- Compression mode: Modified MJPEG.
- Compatible with NTSC and PAL format.
- Support alarm recording and time recording.
- Multi-function searches: be able to distinguish different alarm records and time records from ordinary records; be able to search by time, by segment or by event.
- Support various playback modes: pause, several fast forward and backward play modes.
- Support zoom, auto function, watermark security
- 16 alarm input and 3 relay alarm output.
- Equipped with remote device, and PTZ control enable.
- Support loss and motion detection functions.
- Triplex operation, can play back and search play while it is recording.
- Support network view.
- Support USB backup.
- 480 frame (NTSC, PAL is 400) per second for view, 120 frame (NTSC, PAL is 100) per second for recording.

Table of Contents

SYSTEM SETUP	4
1. SETUP METHODS OF MENU	4
2. ACCESS MENU	4
3. SYSTEM SETUP	5
4. TIME/DATE SET	5
5. HDD FORMAT SET	6
6. FACTORY RESET	6
7. CHANGE PASSWORD	7
8. FIRMWARE UPDATE	8
9. DISPLAY SETUP.....	9
10. CAMERA NAME	9
11. COLOR SETUP	10
12. AUTOSEQ SETUP	11
13. RECORD SETUP.....	11
14. AUDIO CH SETUP	12
15. REC CH SETUP	13
16. NETWORK SETUP.....	13
17. N/W ENABLE SET.....	14
18. MAC SET	15
19. SENSOR SETUP.....	15
20. MOTION DETECTION SETTINGS	16
21. AREA SET	17
22. SCHEDULE SET	18
23. BACKUP SET	19
24. STORAGE INFO.....	19
25. PROTOCOL SET	20
BUTTONS ON THE FRONT PANEL	21
1. RECORDING/PLAYING CONTROL BUTTONS AREA	21
2. FUNCTION CONTROL AREA	21
3.CHANNEL CHOOSING CONTROL AREA	23
SYSTEM CONNECTION	24
1.BACK PANEL AND CONNECTION TERMINALS	24
2.VIDEO AND AUDIO CONNECTION	25
3.ALARM CONNECTION	25
4.HARD DISK CONNECTION.....	27
USER GUIDELINE.....	28

1.START THE MACHINE.....	28
2.TURN OFF THE MACHINE.....	28
3.NORMAL RECORDING.....	28
4.ALARM RECORDING.....	29
5.TIME RECORDING.....	29
6.PLAYBACK.....	30
7.SEARCH PLAY.....	30
8. TIME SEARCH.....	31
9. EVENT SEARCH.....	31
10. START STOP SEARCH.....	32
11.USB BACKUP.....	33
12.USB UPDATE.....	33
13.ZOOM OPERATION.....	34
13.INFORMATION DISPLAY.....	34
14.PTZ OPERATION.....	35
15.DEFAULT SETTING.....	36
16.REMOTE CONTROL.....	38
17. PC VIEW SOFTWARE OPERATION.....	39
EXTERIOR SIZE.....	44
INCASE LIST.....	44
APPENDIX A: TROUBLE SHOOTING GUIDE.....	45
APPENDIX B: RECORD TIME IN FOR 40G HARD DISK (HOUR).....	47
APPENDIX C: INTERNET VIEW/PLAYBACK CONFIGURATIONS.....	48

System Setup

Before using the video recorder, the first step is to set up the system according to user's needs; otherwise the machine will run with the default settings.

1. Setup Methods of menu

When in setup mode, push upward button or downward button, the cursor will move among the settable items, continuous pushing will make the cursor move among the options one by one, and it can recur. The selected one will display in yellow color.

While choosing digital fields, e.g. year, month, day, hour, minute, second etc, push leftward button or rightward button, the cursor can move leftward or rightward among the several digits of one field, continuous pushing will make it move among digits one by one, and it can recur.

Please push "Add" or "Dec" button to change the value that the cursor on, push "ENTER" button to enter sub menu and push menu button to return to previous menu.

2. Access Menu

To access the menu, please **long push** menu button on the front panel, it will display password input window.



The password is a random combination of 4 digits of "0-9". The default is "0000". To enter the menu below, you have to input the correct password by pushing the digital buttons. If the password you input is incorrect, the system will automatically return. If you don't want to input the password and give up the operation, you can push menu button to return. While inputting the password, in order to avoid being revealed to stander-bys, the password you input is displayed on the screen as "*" signs.

To change the password, please refer to "password change".

If you enter the correct password, the main menu will display as below.



3. System Setup

When the cursor moves to System Setup, please push enter button, the System Setup window will appear, which is illustrated as below.



PLAY REPEAT: if you set this to “YES”, when play the video to the end of the HDD, it will automatically play the video from the beginning of the HDD again. If set to ‘NO’, it will stop when play to the end.

VIDEO SOURCE: video format, NTSC/PAL

BUZZER SOUND: buzzer switcher, if set to “OFF”, the buzzer will not work..

4. Time/Date Set

When the cursor moves to TIME/DATA SET, please push enter button, the Time/date setup window will appear, which is illustrated as below. If the DVR is in recording mode you cannot access this menu unless you stop record first.



Please push up, down, left, and right buttons to move the cursor, push ADD and DEC button to modify the value.

FORMAT: the time display format, different for USA, EURO and Asia users.

DISPLAY: if set to "OFF", time will not display on the screen.

LOCAL: time display position.

5. HDD Format Set

When the cursor moves to HDD FORMAT SET, please push enter button, the HDD Format Setup window will appear, which is illustrated as below.



If you select "YES" and push the enter button, all video on the HDD will be lost, if you want to give up, please select "NO".

6. Factory Reset

When the cursor moves to System Setup, please push enter button, the Factory Setup window

will appear, which is illustrated as below.



If you select “YES” and push the enter button, all setting of the DVR will reset to default, if you want to give up, please select “NO”.

7. Change Password

When the cursor moves to Change Password, please push enter button, the Password window will appear, which is illustrated as below.



Password Level: password type of the DVR, the DVR has server types of password:

SETUP: you have to enter password when enter menu

SYSTEM: you have to enter password when enter system and menu, and cancel Schedule.

NO USE: do not need password

ALLWAYS: you have to enter password when enter system and menu, and cancel Schedule, and cancel record.

If you select the Password Change and push enter button, Password change window will display as below:



Please enter the current password, then enter new password and confirm the password.

8. Firmware Update

When the cursor moves to Firmware update, please push enter button, the update window will appear, which is illustrated as below.



Update Method: There are two types of updating the system, usb and network(not support yet)

USB update: make a new folder named “firmware” in the USB device ‘s root directory, copy the update file to the folder, plug in the USB device, enter this menu and select Update Start and push enter button, the system will start updating, if updating finish, the window will display as below, please manual reboot the DVR.



9. Display Setup

When the cursor moves to Display Setup, please push enter button, the Display Setup window will appear, which is illustrated as below.



10. Camera Name

When the cursor moves to Camera Name, please push enter button, the Camera Name Setup window will appear, which is illustrated as below.



Push upward button or downward button to select channels, enter push enter button to change the channel name in the below window.



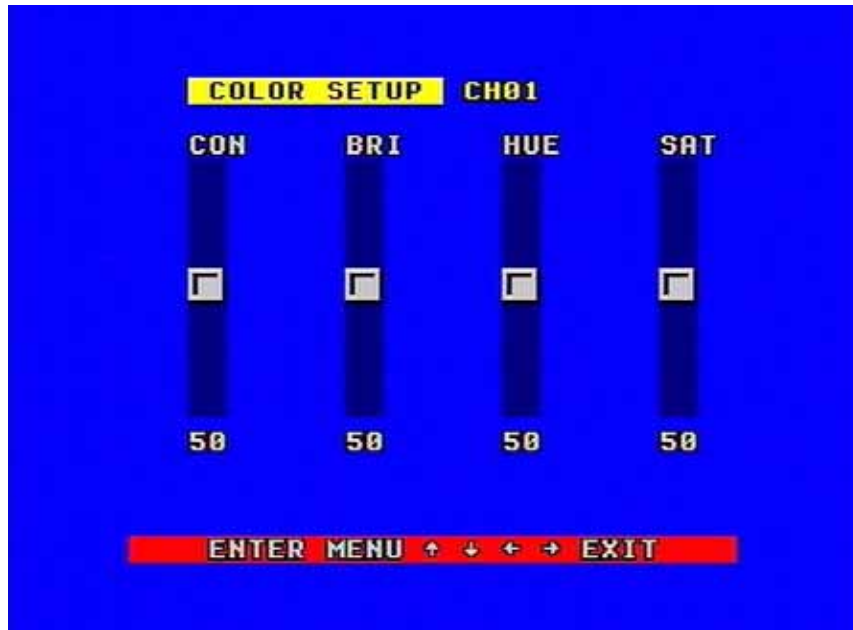
Each channel's name is the combination of eight characters. Push left or right button to select each character, push add or DEC button to modify each character, and then push enter button to save this name.

DISPLAY: if set to "OFF", the channel's name will not display on the screen.

11. Color Setup

When the cursor moves to Color Set, please push enter button, the Color Setup window will appear, which is illustrated as below.

- CON: picture contrast
- BRI: picture brightness
- HUE: picture hue
- SAT: picture saturation



Push left or right button to select CON/BRI/HUE/SAT, push ADD or DEC to change the value, if do not select each of CON/BRI/HUE/SAT, push ADD or DEC to change channel.

12. Autoseq Setup

When the cursor moves to Autoseq Set, please push enter button, the Auto Sequence Setup window will appear, which is illustrated as below.



Push up button or down button to select channel, push ADD or DEC button to change auto Sequence time.

13. Record Setup

When the cursor moves to Record Setup, then push enter button, the Record Setup window will appear, which is illustrated as below. Push upward or downward button to move the cursor. Push "+" or "-" button to change the value. While the DVR is in recording or playback mode, you

cannot access this menu unless you stop record or play first.



OVER WRITE: if set to “YES”, the DVR will automatically overwrite the HDD from the beginning when the HDD is full. If set to “NO”, the DVR will automatically stop recording when the HDD is full. If there are two HDD in the DVR, when the MASTER HDD is full, the video will store to the SLAVE HDD, and when the SLAVE HDD is also full, the DVR will overwrite the MASTER HDD if set this to yes, otherwise it will stop recording if set to no.

REC SPEED: the recording frame rate of the DVR, factory default setting is 30F/SEC for NTSC (25F/1SEC for PAL), Which means DVR records the events at the speed of 30 shots of frames per second. The higher the record frame rate, the more natural look will be displayed on the screen when you playback. The lower the record frame rate, the more you can save the space on the hard disk. The highest frame rate is 120F/SEC(PAL is 100F/SEC) when the resolution is in 320 size.

REC QUALITY: There are four different video quality settings: VERY LOW, LOW, NORMAL, HIGH and VERY HIGH. The higher the video quality, the clearer images when you playback. The lower the video quality, the more you can save the space on the hard disk drive.

RESOLUTION: the record picture size of the DVR, there are two modes: 360 and 720,default is 360. In 720 mode, the record picture is twice bigger than in 360 mode, in 320 mode the REC speed is 120F/SEC(PAL is 100F/SEC) and the maximal REC speed in 720 mode is 60F/SEC(PAL is 50F/SEC).

PB SPEED: the frame rate of playback, default is NO USE, which means the same as record.

14. Audio ch Setup

When the cursor moves to Audio CH Set, please push enter button, the Audio CH Setup window will appear, which is illustrated as below.

There are four audio input channels, for each channel you can select anyone of the 16 channels. Although there are four audio input channels, you can only record one channel’s audio at the same time, so, for the right audio set, you have to select one channel in these four channel in the Record Setup menu.



15. REC ch Setup

When the cursor moves to REC ch Set, please push enter button, the REC ch setup window will appear, it is different for 720 size and 360 size, in 720 size, the window is illustrated as below, push upward and downward buttons to select channel, push ADD or DEC button to change the setting, if the channel is setting “OFF”, this channel will not be recorded in recording mode



If the resolution is set to 360 size, the REC ch Setup window is not accessible

16. Network Setup

When the cursor moves to Network Setup, then push enter button, the network setup menu window will appear, which is illustrated as below. If a PC View software from Internet is connected to the DVR. You cannot access this menu unless you disconnect the PC View.



IP MODE: the DVR has 2 IP mode, STATIC IP and DHCP, if you select STATIC IP, you have to set the IP address manually, if you select DHCP mode, the DVR will automatically get the IP address.

For STATIC IP, push upward, downward, leftward or rightward button to move the cursor among the digits, you can push add and DEC button to modify the digits, also, when select a digit, you can push enter button then push left or right button to select each bit of the digit, and then push add or DEC button to modify the bit of this digit, push enter to save you change.

NETWORK ENV: the DVR has three types of different network conditions: LOCAL, EXTER_LAN, EXTER_WAN, if in local network, please select LOCAL, if for internet use, please choose EXTER_LAN, if the internet condition is not very good, please select EXTER_WAN.

VIDEO PORT: the video transmit port for the computer.

COMMAND PORT: the command transmit port for the computer.

If you change any of the VIDEO PORT and COMMAND PORT, you have to restart the DVR to use the “net viewer” software.

Note: if you have change the MAC address, you can not see the “MAC ADDR SET”.

17. N/W Enable Set

When the cursor moves to N/W Enable, then push enter button, the N/W Enable setup window will appear, which is illustrated as below.



If one channel here set OFF, this channel will not transmit to the network, so if you want to see a channel from network, you have to set this channel on.

18. Mac Set

When the cursor moves to Mac Set then push enter button, the Mac Set window will appear, which is illustrated as below.



If you have more than one DVR in a local area network, you have to set each DVR to have an exclusive MAC address, but remember that you have only one chance to modify the MAC address, once you have changed the MAC address, this menu will not appear again. If you want to change the MAC address again, please load the factory set, then you can change the MAC address again.

19. Sensor Setup

When the cursor moves to Sensor Set, then push enter button, the sensor setup window will appear, which is illustrated as below. Push upward or downward button to move the cursor. Push "+" or "-" to change the value.



ALARM ENABLE: alarm trigger switch, can be set to off, low lever or high lever. If users set it to off, the DVR will ignore the alarm input.

MOTION ENABLE : Motion alarm switch, can be set to on or off, if set to off, the motion alarm will be ignored.

MOTION LEVEL: motion sensitivity level, if the figure in the picture is small, please set to high or very high, the default is normal.

BUZZER TIME: buzzer sound time when there is a sensor or motion alarm.

SENSOR RECTIME: when a motion or sensor alarm occurred, the DVR record last time, the default is 1 minute

Note: Users should press Schedule button after setting up the parameters so to activate the settings.

20. Motion Detection settings

1) When surveying nearby objects (2-10 meters)

When in daytime, please set motion detection sensitivity as Normal level; when in night, please set as low.

2) When surveying objects in 50-100 meters area

The objects 50-100 meters away will be quite small on the screen. When in daytime, please set motion detection sensitivity as high level.



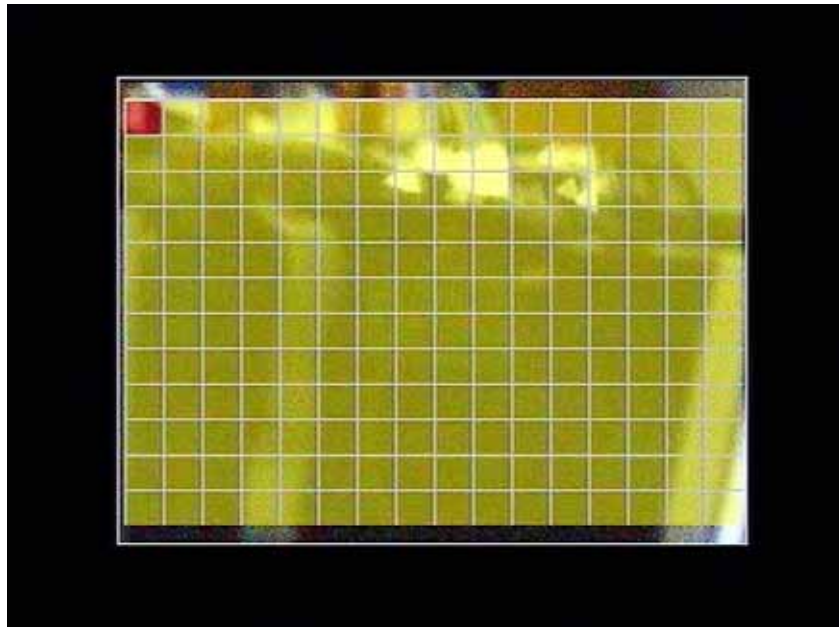
When in night as below, please set as normal level.



Note: the above suggestions are from many times' tests. User can select the best parameters according to the actual operation environment.

21. Area Set

When the cursor moves to Alarm Set, then push enter button, the alarm setup window will appear, which is illustrated as below. Please push up, down, left, right button to move the cursor and push enter button to change, long push enter change all value the same as you selected.



If one area is set to yellow, this area is motion detected enable, and gray is disable. So if you want to mask some place, just set these area gray.

22. Schedule Set

When the cursor moves to Schedule Set, please push enter button, the schedule setup window will appear, which is illustrated as below.



You change a recording schedule during a week using this setup, from Monday to Sunday, you can set a period time in each day.

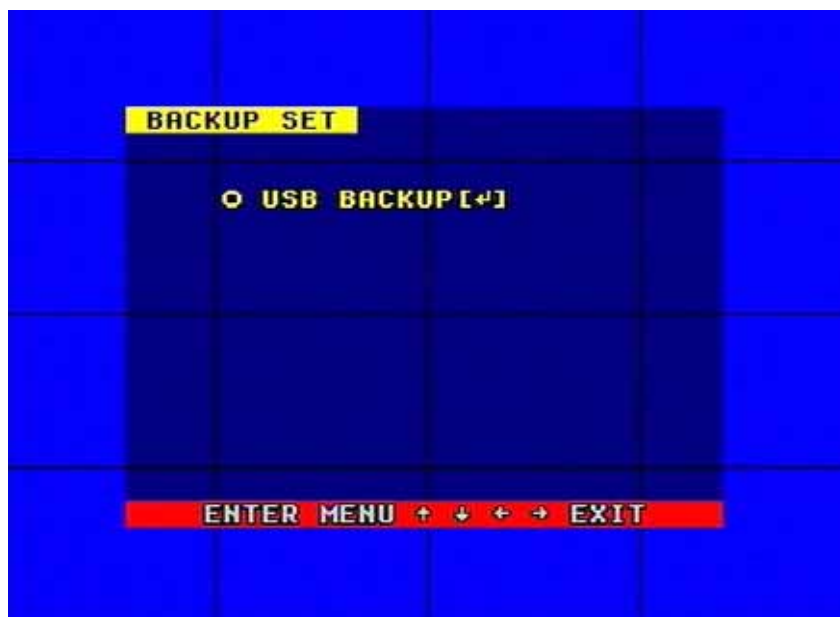
START: start record time

STOP: stop record time

Note: Manual record mode and schedule record mode (including motion detection record mode, sensor record mode and time schedule record mode) cannot be valid at the same time. Once users select Schedule record mode, manual record mode will invalid; once user select manual record mode, schedule record mode will be invalid.

23. Backup Set

When the cursor moves to Backup Set, please push enter button, the backup setup window will appear, which is illustrated as below.



Plug in the USB device, and press enter button, you can see the below picture.



There are two types of backup mode: STILL and MOVIE, in STILL mode you can backup picture and in MOVIE mode you can backup video.

Press ADD or DEC to change the backup mode.

Please refer to USB Backup.

24. Storage Info

When the cursor moves to Backup Set, please push enter button, the backup setup window will appear, which is illustrated as below.

You can see the HDD information in this window



25. Protocol Set

Set the right protocol, you can control the SPEED DOME by the DVR..

When the cursor moves to Protocol Set, then push enter button, the protocol set window will appear, which is illustrated as below. Push upward or downward button to move the cursor, and push “+” or “-“ to change the value.



CHANNEL SEL: select the channel that is connected to the speed dome which you want to control

BAUDRATE: Can change form 1200bps to 19200bps.The default is 2400bps.

DOME ADDR: The address of the speed dome, changeable from 0x00 to 0xff.

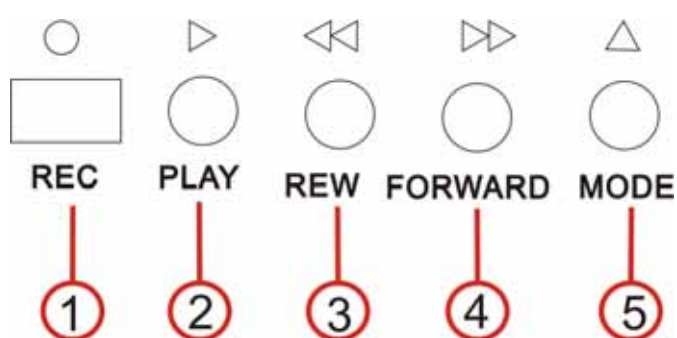
PROTOCOL: The protocol that DVR control speed dome, include pelco-p, pelco-d, neon, lilin, default is pelco-p.

Buttons On the Front Panel

The front view of the video-recorder is illustrated as below.



1. Recording/Playing Control Buttons Area



1.Record: It is manual recording button. Push this button to record video to hard disk, Re-push this button, it will stop recording (need password). So, this button is the switch button of manual recording and stopping recording operations. Recording and stop will work simultaneously on 16 channels. This button doesn't work in schedule mode.

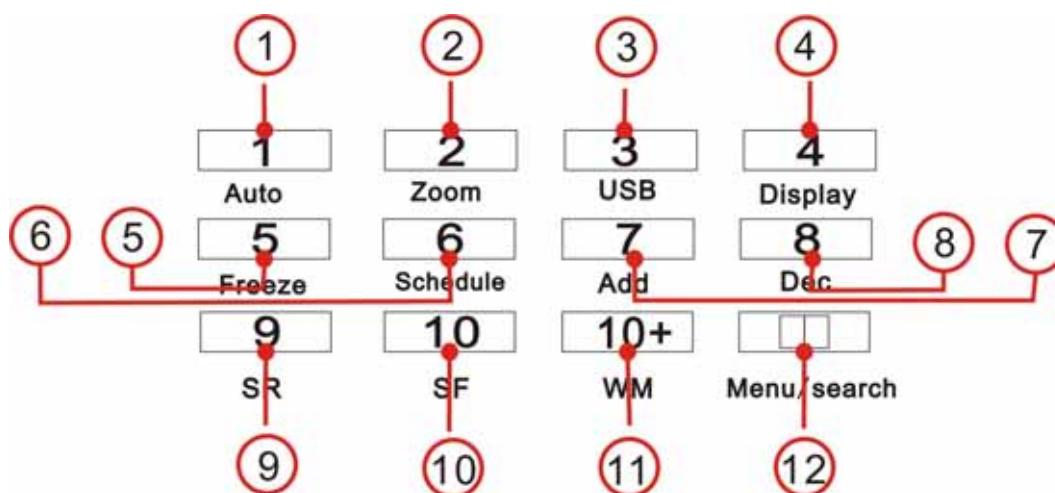
2.Play: Push this button to start playing the video stored in hard disk, Re-push this button, it will stop playing So, this button is the switch button of playing video and stopping playing operations. Play and stop will work simultaneously on 16 channels. This button doesn't work while Time recording and Alarming recording.

3.Rew: Fast backward button. Push this button to start fast backward playing till push play button to start normal playing

4.Forward: Fast forward button. Push this button to start fast forward playing till push play button to start normal playing The fast forward has five speeds; each time you push the button will change the speed from slow to fast and then back to slow.

5.MODE: Mode change key, push this key to change to shift mode, re-push to change to normal mode.

2. Function Control Area



1.Auto/1: Auto key, in shift mode, push this button, The DVR will be in auto dwell state, it dwells according to the time set in auto sequence set menu, you can set the dwell time of each channel. Push this button to quit this mode. If not in shift mode, push this button to see big picture of channel 1. While inputting numbers, this button is used as number key of “1”.

2.Zoom/2: Zoom key, in shift mode, push this button, the DVR will be in zoom mode, please refer to zoom operation in user guideline for details, push zoom button again to cancel zoom operation. If not in shift mode, push this button to see big picture of channel 2. While inputting numbers, this button is used as number key of “2”.

3.PIP/3: USB key, in shift mode, push this button, the DVR will start USB backup, please refer to USB backup operation in user guideline for details. If not in shift mode, push this button to see big picture of channel 3. While inputting numbers, this button is used as number key of “3”.

4. Display /4 : Display key, in shift mode, push this button to display current information on the screen, push again this to clear the information display. If not in shift mode, push this button to see big picture of channel 4. While inputting numbers, this button is used as number key of “4”.

5.Freeze/5: Freeze key, in shift mode, push this button, the DVR will be in freeze mode, please refer to freeze operation in user guideline for details, re-push this button to quit freeze mode, If not in shift mode, push this button to see big picture of channel 5. While inputting numbers, this button is used as number key of “5”.

6.Schedule/6: schedule key, in shift mode, push this button to enter schedule state, if the DVR is in schedule state, there will be a “S” symbol on screen, push again this button to quit schedule mode. If not in shift mode, push this button to see big picture of channel 6. While inputting numbers, this button is used as number key of “6”.

7.ADD/7/: Add key, push this button to see big picture of channel 7. When in system setup menu, this is an increase button. While inputting numbers, this button is used as number key of “7”.

8.DEC/8/: Decrease key, push this button to see big picture of channel 8. When in system setup menu, this is a decrease button. While inputting numbers, this button is used as number key of “8”.

9. SR/9: Single frame rewind button, in shift mode, while in playback state, long press this button can see single frame rewind, press play button to play normally. If not in shift mode, push this button to see big picture of channel 9. While inputting numbers, this button is used as number

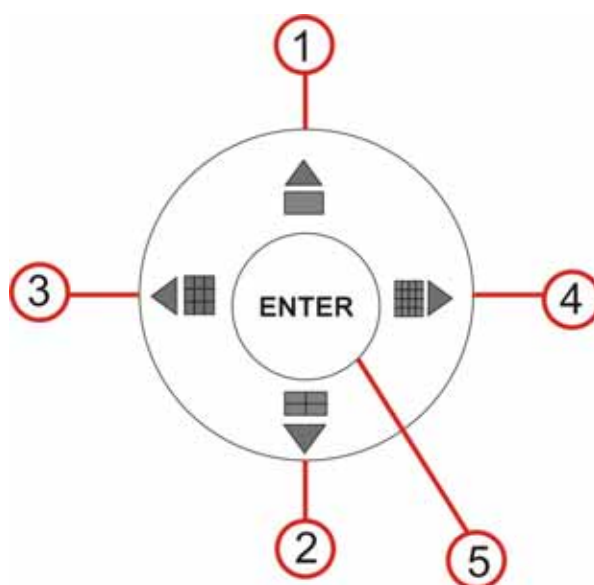
key of “9”.

10. SF/0: Single frame forward button, in shift mode, while in playback state, long press this button can see single frame forward, press play button to play normally. If not in shift mode, push this button to see big picture of channel 10. While inputting numbers, this button is used as number key of “0”.

11.WM/10+: Watermark button, In shift mode, if the DVR is playing video, you can push this button to see the watermark of the picture, if the video was recorded by this DVR and has not be changed, there will be a watermark symbol in each picture, push watermark key again to clear the display. If not in shift mode, push this button and then push 1 to 6 to see big picture of channel 11 to channel 16.

12.Menu/search: push this key to enter search menu, long press this key to enter menu(need password), if in menu setup, push this key to quit current menu.

3.Channel Choosing Control Area



1.Big picture/up: Push this button to see full screen, re-push this button to see the next channel. While selecting menu items, push this button to move up the cursor.

2.Four pictures/down: Push this button to see four pictures display, re-push this button will display next four pictures. While selecting menu items, push this button to move down the cursor.

3.Nine pictures/left: Push this button to see nine pictures display, re-push this button to see eight pictures. While selecting menu items, push this button to move the cursor leftward.

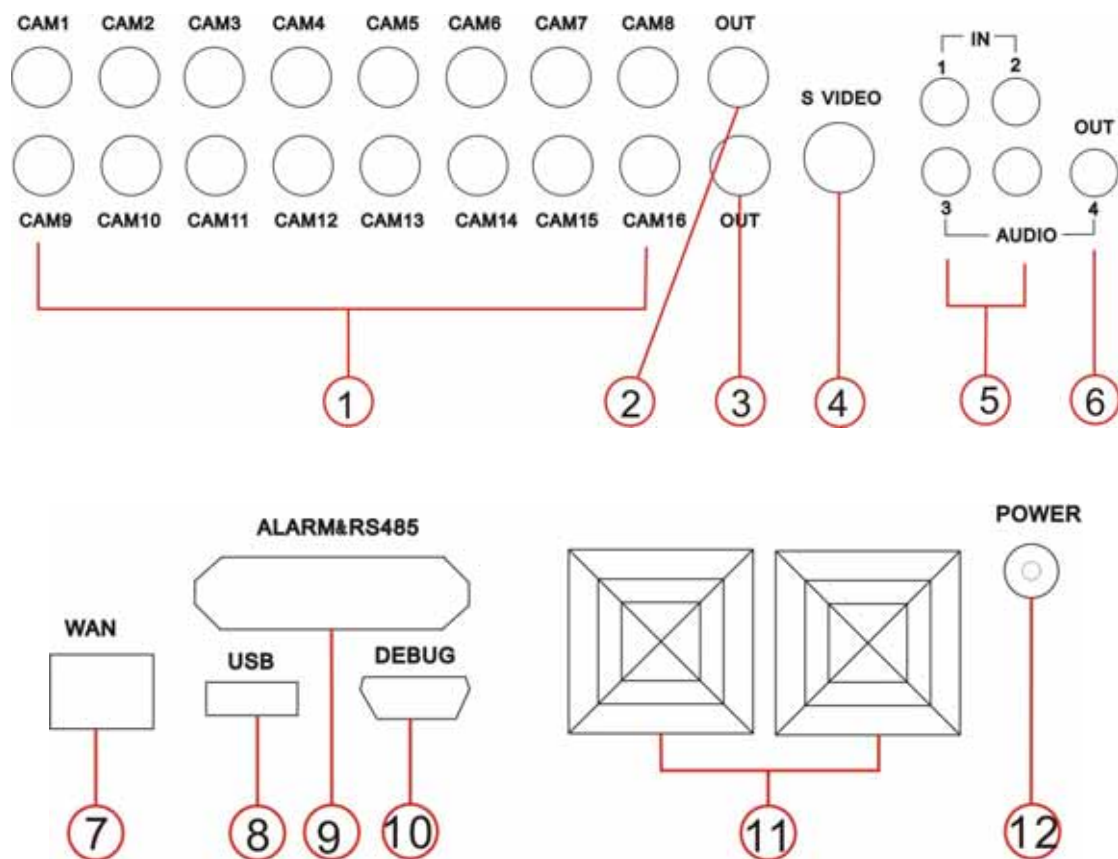
4.Sixteen pictures/right: Push this button to see sixteen pictures display, re-push this button to see thirteen pictures. While selecting menu items, push this button to move the cursor rightward.

5.Enter: While selecting menu items, push this button to select the item. While playing video, push this button to pause the play, push play button to continue play.

System Connection

1.Back Panel and Connection Terminals

The power cable and input, output signal terminals are all at the back of the machine, the connections to monitor, camera etc equipments are all carried out through the terminals and sockets on the back panel. The back view of the machine is illustrated as below.



Each part of the back panel is illustrated as below:

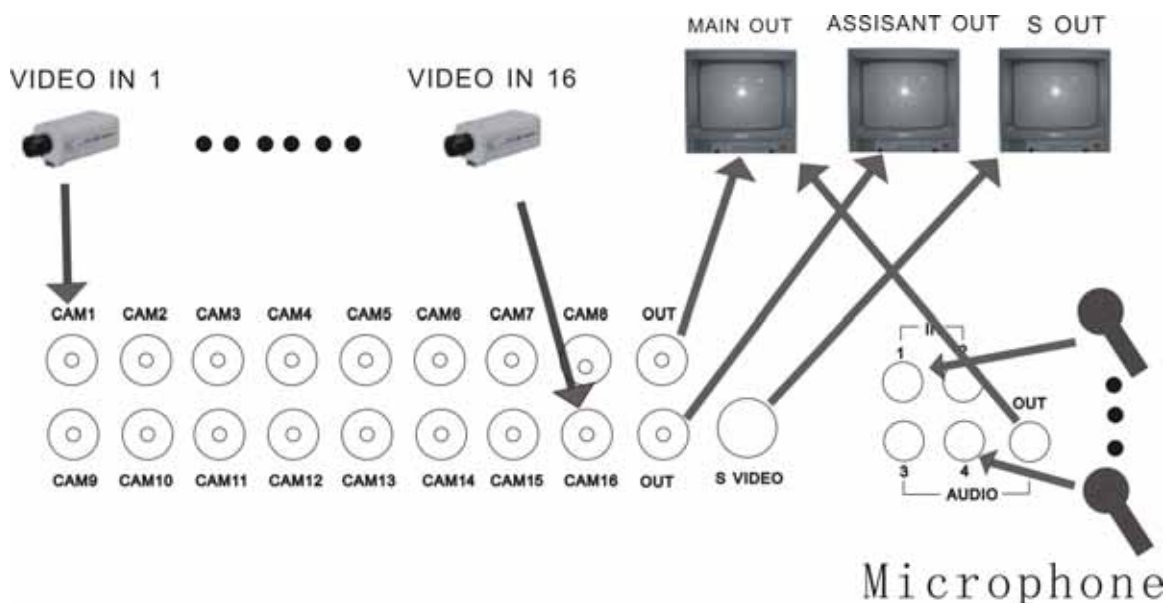
1. video in put 1-16
2. main output
3. assistant monitor
4. s video
5. audio in put
6. audio output
7. net interface
8. USB port
9. alarm and RS485 port(see below)
10. debug port
11. fan
12. power

Alarm and RS485 port define:

- 1---12: sensor 1---sensor 12
- 13,20,24,25: GND
- 14---17: sensor 13---sensor 16
- 18: RS485A 19: RS485B
- 21: COM 22: NC 23: NO

2.Video and Audio Connection

The DVR can support up to 16 cameras video input at the same time.



There are two steps for camera installation.

- .Connect the Video Signal Line to the DVR channel input.
- .Connect the power adaptor jack to the camera.

The DVR can connect 4 channel's audio input, but you can only select one for recording.

To display the DVR picture, the DVR's video output signal should be transferred to your TV set or monitor. Any TV set that has a "video input" terminal is suitable for displaying the image. The figure above shows the video and audio signal line connection.

Note: at one time, you can only connect one audio input, which means, if you connect an audio to cam1, you cannot connect any of cam2 to cam 4. You should plug them out.

3.Alarm Connection

The DVR can support up to 16 alarm input and three alarm output.

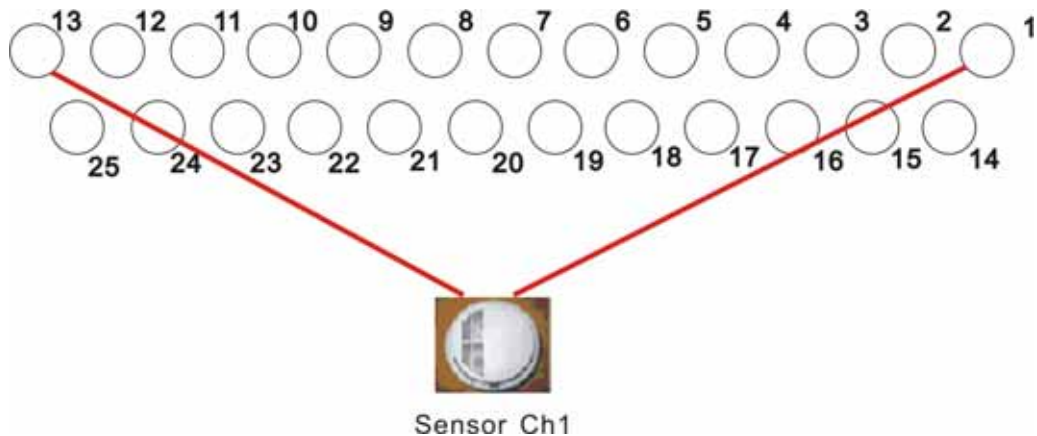
Alarm input: There are two types of alarm input.

1. Voltage output (5V and 0V)

A: In case sensor output high voltage (5V) normally and output low voltage when triggered (0V), then users must set DVR as low voltage alarm.

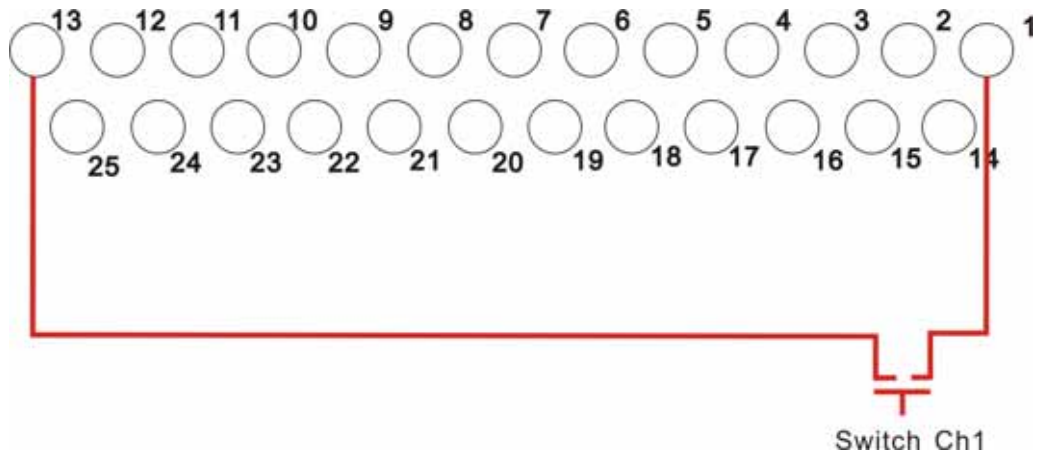
B: In case sensor output low voltage (0V) normally and output high voltage when triggered (5V), then users must set DVR as high voltage alarm.

Please refer to the picture below, channel 2 to channel 16 are the same as channel 1.



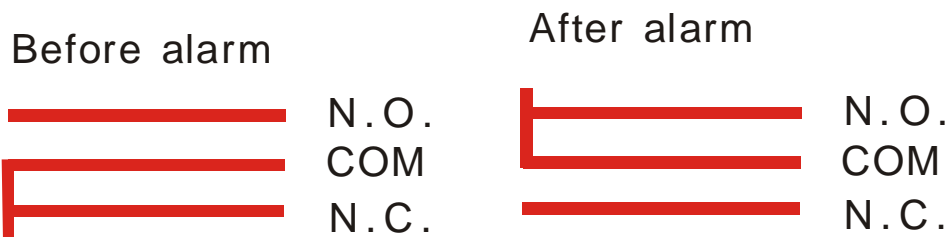
2. Open/Close output

- A: N.O. Normal open , close when triggered. DVR must set as low voltage alarm.
 - B: N.C. Normal close , open when triggered , DVR must set as high voltage alarm.
- Please refer to the picture below, channel 2 to channel 16 are the same as channel 1.

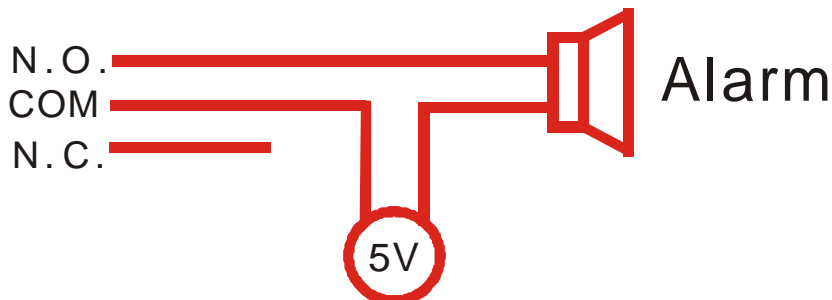


Alarm output

There are three alarm output pin, the status of these pin are illustrated as below





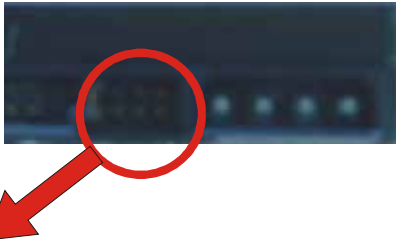



There is an example for alarm output connection



4.Hard Disk Connection

There are process to install the hard disk.

Note: If the DVR comes with a HDD, skip the following steps.

<p>1. Pull out the hard drive rack from the DVR side panel.</p> 	<p>2. Open the top cover of the drawer.</p> 
<p>3. Jump HDD to Master</p>  <p>Jump to Master</p>	<p>4. Connect the ribbon cable (IDE) cable & power cable.</p> 
<p>5. Close the top cover of the drawer and put the hard drive drawer back into the DVR. (Make sure the cables are firmly pressed onto the HDD interface)</p> 	<p>6. Lock the hard drive draw by turning the key clockwise.</p> 

If you have another HDD, please jump that HDD to SLAVE, and open the machine, put the HDD to the HDD shelf, and then connect the power and digit cable.

User Guideline

1.Start the Machine

Before starting the machine, please make sure all the items in the “**Security Notice**” at the beginning of this manual are fulfilled.

Before starting the machine, please check the system connection, input and output equipment connection.

Please insure the video-recorder’s input video (NTSC/PAL) and the monitor (NTSC/PAL) meet the demands.

Start exterior equipment after checking over.

Insert the removable hard disk case to the end, and lock it up (turn right the hard disk lock); connect the power, the machine start to work.

2.Turn off the Machine

Normally turn off the machine when the system shutdown, which means do not to turn off the machine while playing or system setting up, especially not to turn off the machine while recording

Push recording button to stop recording or push playing button to stop playing or exit from system setup menu, then turn off the power.

If do not use the video recorder for a long time, should pull out the power line from the electrical outlet.

3.Normal Recording

Connect the power to all related equipments; ensure that there is video input.

Push display button to check spare space of the hard disk, if there is no much space, please think whether to change hard disk first or select overwriting modes.

Check recording parameter setup before recording; select video quality, frame rate. you cannot change record setting during the process of recording.

Manual recordings belong to normal recording. Under the manual mode (non-schedule status), here pushing record button will record all channels’ video.

Push the record button to begin recording, sixteen channels will start simultaneously recording. While in normal recording mode, push record button, and enter the right password, it will stop recording.

During the process of recording, if the hard disk is full, and the system is set to automatic overwrite, then the recording will not be interrupted, and it begins to overwrite the earliest

recorded area; if the system is set to overwrite disable, it will stop recording.

4. Alarm Recording

Alarm recording is not started by manually pushing record button, all the recording started by manually pushing the record button are normal record.

Alarm recording can be activated by alarm input signal or motion, so it must to check whether the connection of alarm input equipment is correct, stable and reliable, and the alarm set is right, please refer to sensor setup.

The prerequisite condition of whether the alarm recording can be activated by exterior input signal or the motion is that the system must be set on schedule, also, in the menu of alarm setup, for exterior input alarm, alarm enable of that channel must set to "ON", for motion alarm, motion enable of that channel must set "ON", and set the right area for motion detect.

Under the state of off-schedule, system will never start alarm recording. Setting schedule on or off is achieved through pushing the schedule button on the front panel, but not through system setup menu and window. Under schedule-on situation, the character "S" will display on the screen.

Alarm video recording cannot stop by pushing record button, but can stop by removing schedule. Because once the system is set on schedule, the schedule cannot be removed randomly, so there is a password protection to remove schedule, only after inputting correct password, you can take schedule off.

Check alarm recording setup before recording; confirm the video quality and the frame rate, the record setting cannot change during recording process.

As long as the alarm input signal is effective, the alarm recording continues. When the alarm input signal loses efficacy, the time set up by "A/M REC TIME" becomes effective, and when the time goes out, the alarm recording automatically stops. In course of this, if you want to manually stop alarm recording, the only way is to remove schedule (answer the password).

5. Time Recording

Time recording starts and stops recording automatically according to the pre-arranged time period. It is applied to fixed timetable, for example, the periodical work time recording (or off time recording) with fixed start/stop time.

To start Time recording function, besides making record schedule setup beforehand, must push down the schedule button on the front panel to set schedule on. While pushing down this button, the schedule symbol "S" will display on the screen. Without pushing the schedule button, the Time recording parameter setup will not work.

The prerequisite condition of whether the time recording takes effective is system must be set on schedule.

In time record state, you can push again schedule button then enter password to stop time recording.

Because Time recording is correlated closely with time, so before using this function, should previously adjust the time.

6.Playback

Push play button , system begins to play the images recorded

In the process of playing, push pause button to pause playing, re-pushing play button can resume play. continuously

In the process of fast forward playing or fast backward playing, pushing push play button will begin normal playing from the current place.

Continuous pushing forward button will change the fast-forward among five levels of speed (X2, X4, X8, X16, X32) circularly. Continuous pushing reward button will change the fast backward among four levels of speed (X2, X4, X8, X16) circularly.

During playback mode, long press single frame rewind button will play backward frame by frame, long press single frame forward button will play forward frame by frame. Push play button to play normally.

Push again play button will stop playing.

7.Search Play

Push search button , search play window will display on the screen.



TIME SEARCH: search play by input time.

EVENT SEARCH: search play by event list.

START STOP SEARCH: search play by segment.

Push upward and downward button to move cursor, then push enter button to enter sub menu you select, push search button to quit from search menu.

8. Time Search

When the cursor moves to Time Search, then push enter button, the time search window will appear, which is illustrated as below.



There red block means there has video at that time

Push leftward and rightward button to move the cursor among year, month, day, hour and minute, if you select the year and push enter button you will select month and so it is with day and hour. Push add and DEC button to modify the time. If you select the minute and that minute has a red block then you can push enter button to play the video from that time you selected.

9. Event Search

When the cursor moves to Event Search, then push enter button, the event search window will appear, which is illustrated as below.

There are four types of event list: MOTION, ALARM, SCHEDULE and NETWORK. MOTION means motion alarm recording, Alarm means sensor alarm recording, SCHEDULE means time recording, NETWORK means network recording

Push upward and downward button to move the cursor among the event list, push leftward and rightward button to see previous or next page, push enter button to play the segment you select. Push search button back to Search Play menu.



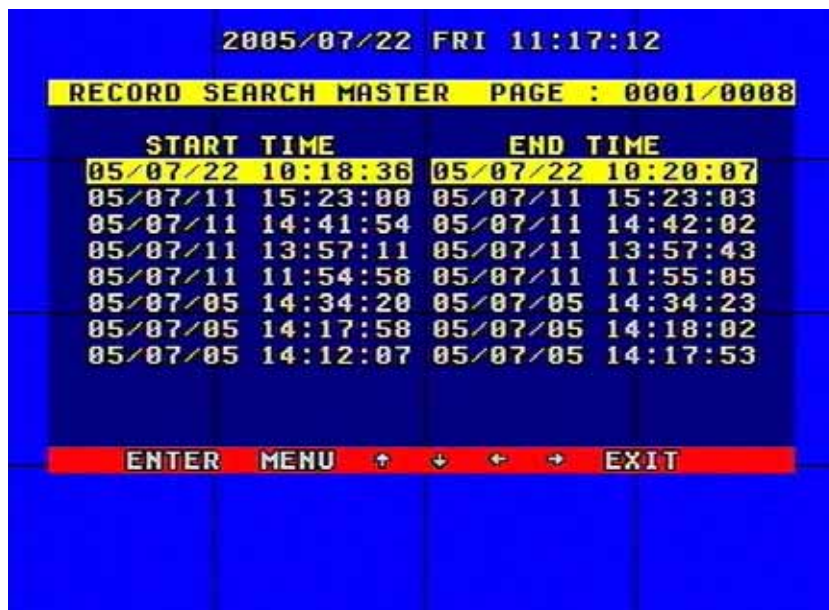
If you want to change the HDD between MASTER HDD and SLAVE HDD, just push mode key, then push enter key to change, push menu to give up.



10. Start Stop Search

When the cursor moves to Start Stop Search, then push enter button, the Start stop search window will appear, which is illustrated as below.

All record segments are displayed here, push upward and downward button to move the cursor among the segment list, push leftward and rightward button to see previous or next page, push enter button to play the segment you select. Push search button back to Search Play menu.



If you want to change the HDD between MASTER HDD and SLAVE HDD, just push mode key, then push enter key to change, push menu to give up.

11.USB Backup

Plug in the USB device, go to the menu of Backup set, check that if the USB device was detected or not, and the free space of the USB device is enough or not, select the backup mode, then quit the menu setup.

In shift mode, if you select “STILL” for the backup mode in the Backup Set menu, push the USB button, it begin to backup the main out picture to the USB device, there will be a “S” blinking on the screen, when it stop blinking, the backup of the picture is done, you can plug the USB device out and see the picture on a computer.

If you select “MOVIE” for the backup mode in the Backup Set menu, push the USB button in shift mode, it begin to backup the main out video to the USB device from the moment, push USB button again to select the end of the backup video, there will be a “A” blinking on the screen. This may take a little time, and make sure the USB device has enough free space, if blinking stops, the backup is ok, you can see the video on a computer with net viewer software

12.USB Update

Create a folder named “firmware” in the USB root directory, copy the update files to the folder. Plug in the USB device, go to the menu of Backup set, check that if the USB device was detected or not, go to the Firmware Update menu and select USB method, move to Update Start and press enter button, update will start, if you see picture below, update is ok..

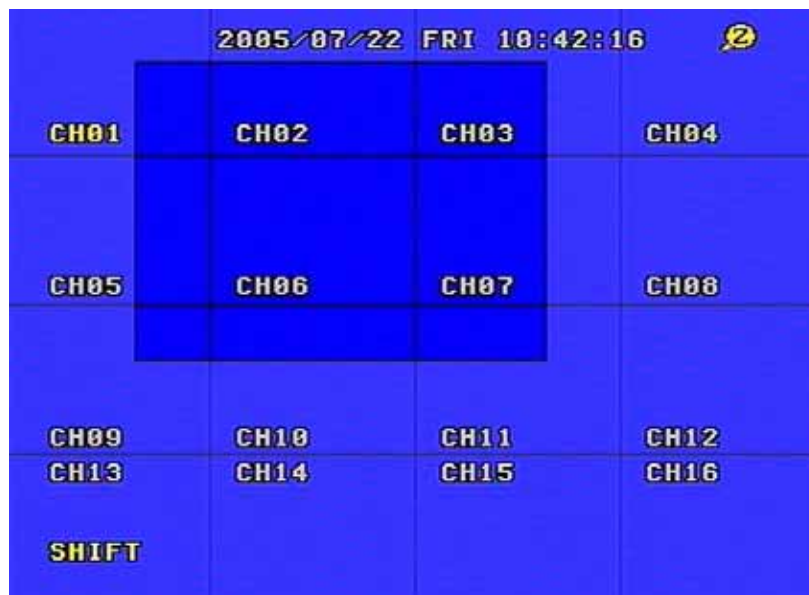
Then reboot the DVR.

NOTE: do not shut down the DVR when the DVR is updating, it may cause fatal problem.



13.Zoom Operation

In shift mode, push zoom button, the DVR will be in zoom mode, which is illustrated as below. Push upward, downward, leftward or rightward to move the zoom area, then push enter button to zoom, push zoom button again to cancel zoom operation.



13.Information Display

In shift mode, push display button, the main information of the DVR will display on screen.



HDD SIZE: the size of the hard disk you insert to the DVR.

HDD USED: the used space of the hard disk.

HDD READ: current HDD read address for playback

OVERWRITE: overwrite time of the HDD

REC LIST: number of record list

EVENT LIST: number of event list

REC OVER: record list overwrite or not

EVENT OVER: event list overwrite or not.

NETWORK IP: IP address of the DVR.

S/W VER: software version

14.PTZ Operation

This DVR can control all speed domes which are connected to the DVR.

To control the speed dome, make sure all the lines are correctly connected, first you must set the right protocol, baud rate, and speed dome's address for each speed dome, please refer to protocol set.

For example, you connect the first speed dome to channel one, you have to make sure that the baud rate, the protocol, and speed dome1's address is the same as the speed dome you connect to the channel.

PTZ can only be operated by remote device, push the PTZ button on the remote device, "PTZ" will be display on the screen, then select 1 to 16 to choose PTZ channel, the channel number will

be displayed after “PTZ”, please refer to the picture below:



You can push upward, downward, leftward, rightward button to move the speed dome, and push the enter button to stop. If you push the Iris button, the character “Iris” will appear on the screen, please refer to the picture below, then you can push the “+” and “-” button to change the iris, the same to control the focus, zoom, and speed, also push enter button to stop.



Push the PTZ button one more time to exit from PTZ control.

15.Default Setting

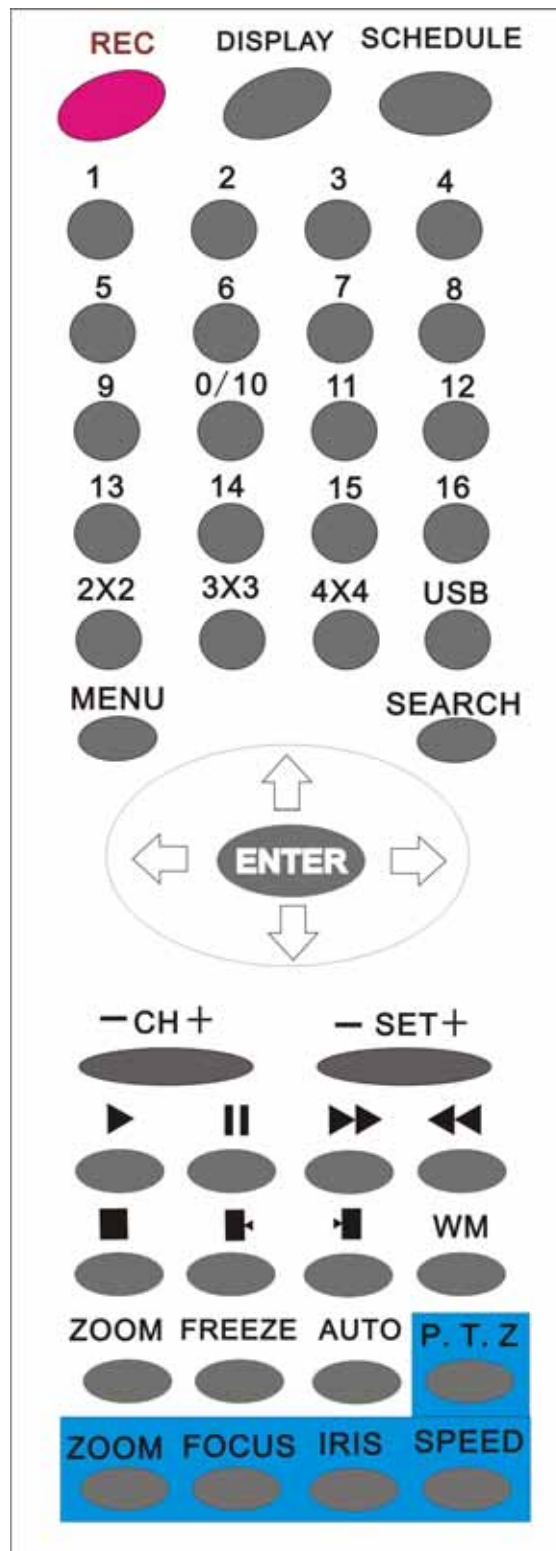
Default setting for each item is shown in the below chart.

“Defaults” is the initial setup by the manufacturer. User can change the setup according to the actual environment and demands. If there is any confusion or unexpected effect, choose “Defaults” and readjust.

You can choose “FACTORY RESET” in “SYSTEM SET” menu, and reset all settings to default setting.

	Setup window for each item	Setup items	Default setup	Selectable setup
S Y S T E M S E T U P	General setting	Year/Month/Day/ Hour/Minute	2005/01//01 12/00/00	2000~2099/Common sense rules
		Auto Time	1 second	0~99second
		Buzzer Sound	ON	ON/OFF
		Password	0000	N/A
		Play Repeat	YES	YES/NO
		Video Input	NTSC format	NTSC/PAL
	Recording Para	Quality	Normal	Very high/High/Normal/Low
		Overwrite Enable	YES	YES/NO
		Rec Speed	60f/s(NTSC) 50f/s(PAL)	120f/s~1f/2s(NTSC) 100f/s~1f/2s(PAL)
		Resolution	360	360/720
		PB Speed	NO use	120f/s~no use(NTSC) 100f/s~no use(PAL)
		Audio Enable	CAM 1	CAM1~CAM16/OFF
		A/M REC Time	1 Minute	1~99minute
	Net Work Setting	Sub Net	255.255.255.0	N/A
		Gate Way	192.168.1.1	N/A
		IP Address	192.168.1.111	N/A
		Net Work Speed	Fast	Fast/Normal
		N/W Enable	ON	ON/OFF
		Mac Address	0a0b0c0d0e0f	N/A
	Alarm setting	Alarm Enable	OFF	ON/OFF
		Motion Enable	OFF	ON/OFF
		Motion Level	Normal	Very low/Low/ Normal/High/Very high
		Buzzer Sound	No Use	0~99 second
		Schedule setting	OFF	OFF/ON
Protocol Setting	Baud Rate	2400	2400/4800/9600/19200/38400	
	Protocol	PELCOP	PELCOP/PELCOPD/ LILIN/ NENO	
	Address	01-16	0~0xff	

16.Remote Control

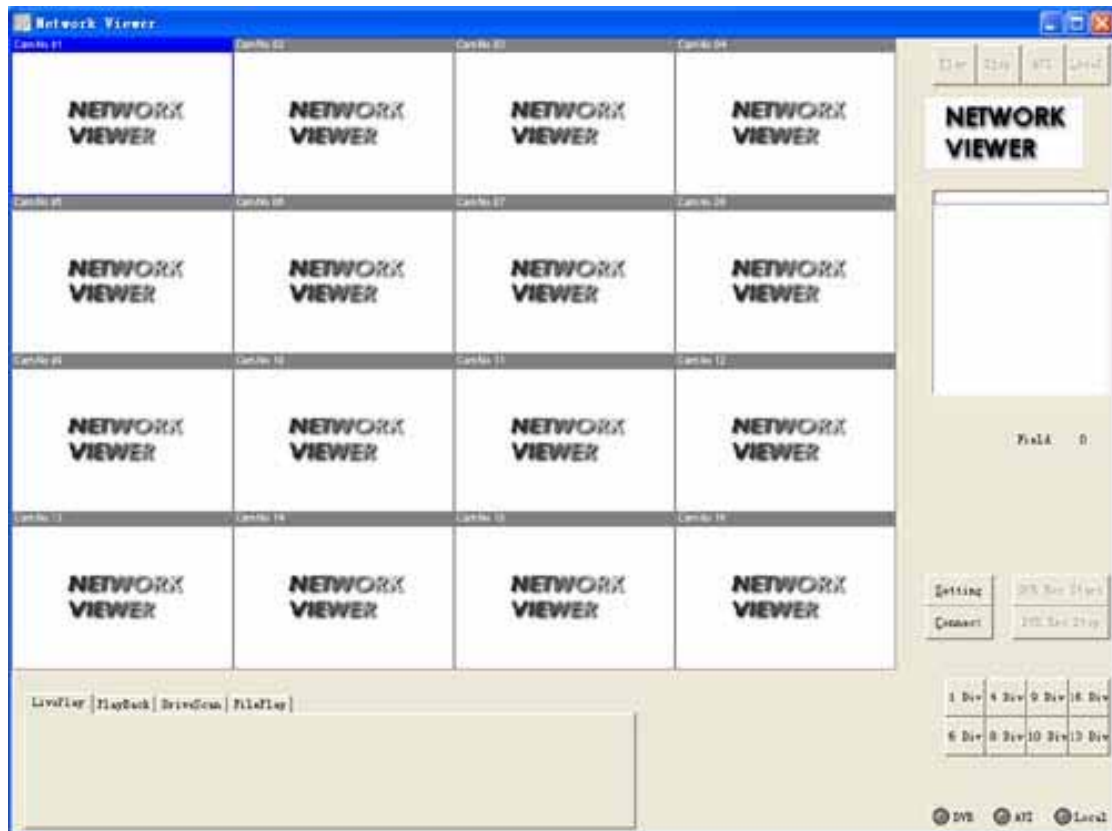


- All the function of the DVR can be operated by the remote device.

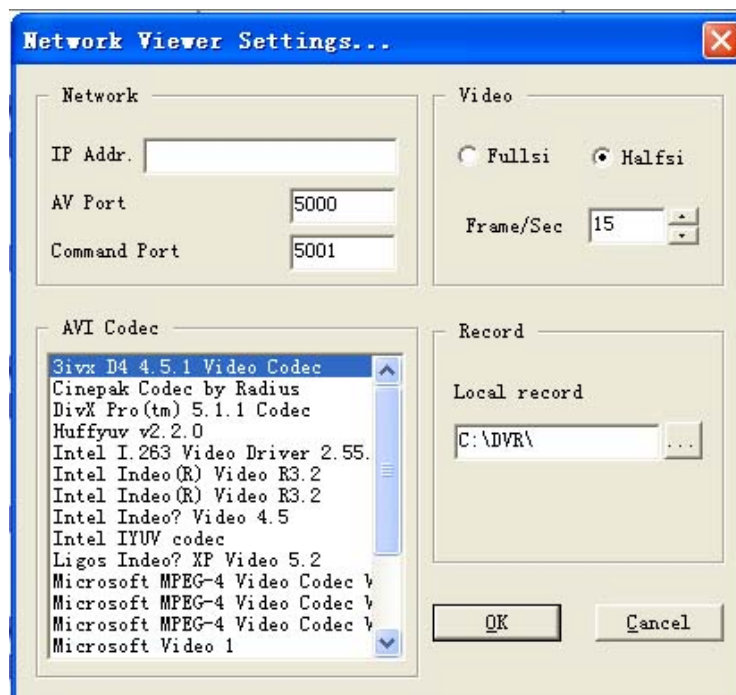
17. PC View Software Operation

Use the PC View software, you can view the DVR through Internet, also, you can view and backup the video information on the HDD through a computer.

Open the software, you will see the window below:



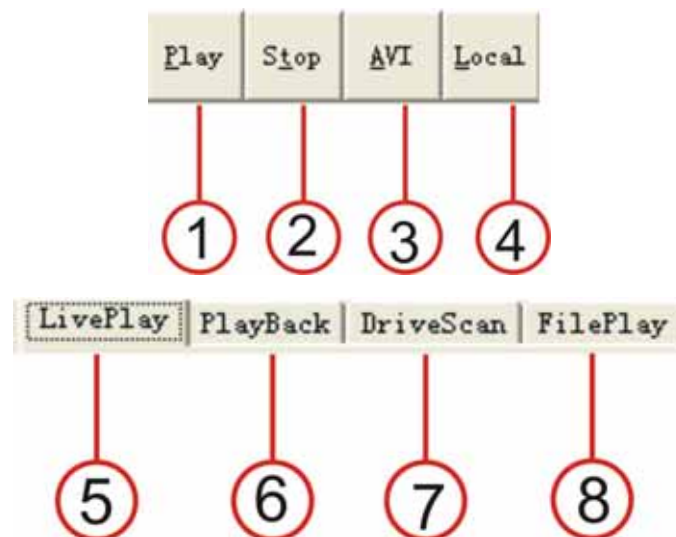
Please click “Setting” button, you will see the window below:



Enter the IP address and click “OK” button, then click the connect button and enter the password, if connect to the DVR, you can see the picture below. Click the “Confirm” button.



When users survey by Internet, they should firstly open ports 5000-5002 (default and can be changed on the DVR) on the router side. Please learn more about how to do from the manual of router.




1. Play: if you select this, you will start to play the video on the DVR.
2. Stop: if you select this, you can stop the play.
3. AVI: if you select this, you can save the picture to AVI format on you computer.
4. LOCAL: you can save the video in you computer, and open with this software.
5. Live play: you can select this button to see live picture, just click the play button.
6. Playback: you can view the playback video on the DVR
7. Drive Scan:.if you select this, you can view the video on the HDD which recorded in the DVR and then connect to the computer.
8. File Play: you can play the video file on the computer.

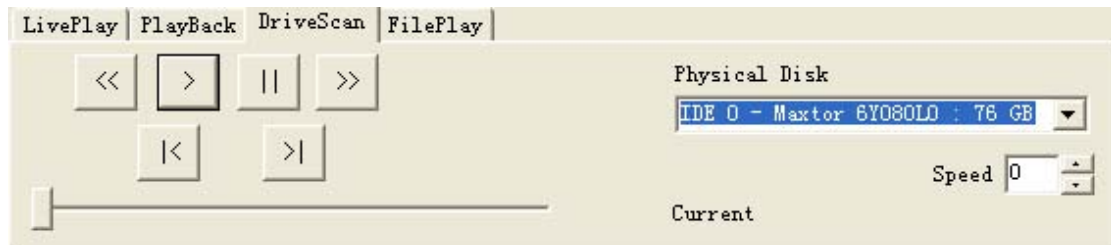
AVI Save: when play video, click “AVI” button, the video will save as AVI format on the computer, you can play the file with any media player that supports.

Local: when play video, click “Local” button, the video will save to the computer, you can

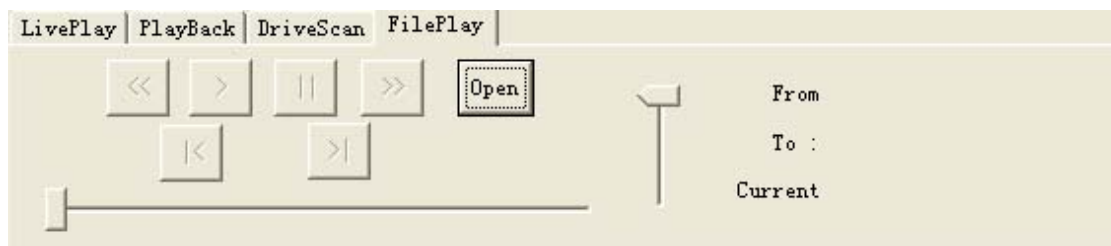
Double click the event list, you can see the playback video.

The record list operation is the same as event list operation.

Drive Scan: Connect the HDD that used in the DVR to a PC and then select Drive Scan, Drive Scan window will display, click  and select one HDD, then you can play all the video on the HDD.



File play: if the software is in File Play mode (click "File Play"), file play window will display, it can play the video on HDD of you computer.



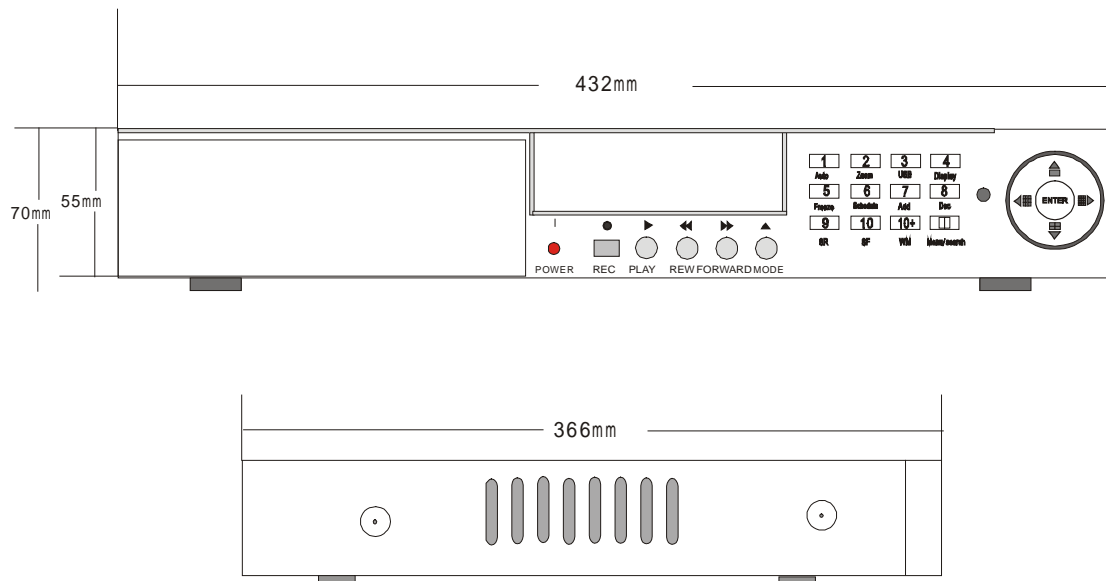
Click "Open", select one video file, the click play, it will play the video file

Main standard & parameter chart

Item	Specification
Video signal	NTSC/PAL
Video input	Composite : 1.0V p-p/75 , BNC × 16
Video output	Composite : 1.0V p-p/75 , BNC × 2
Audio input	-8Db 22K , RCA connector × 4
Audio output	-8Db 3K , RCA connector × 1
Alarm input	16
Alarm output	1
Compression standard	Modified MJPEG
Record time	18-1680 hours/40G
Electron clock	Year/Month/Day ; Hour/Minute/Second
Secrete function	Password protection
Power source	DC12V
Power	40W
Environment temperature	Work Temperature : +5 ~+50 ; humidity : < 90% Store Temperature : -20 ~+70 ; humidity : < 95%
Exterior size	432 × 55 × 366mm
Weight	About 4 Kg

Notice: Sorry for not inform in time of any changes to the standards and exterior sizes.

Exterior size



Incase list

Incase list

Name	Quantity
16-channel hard disk video recorder	1
Remote device	1
Power wire	1
Keys to removable hard disk control lock	2
User guideline	1

In case of any question, please do not hesitate to contact the dealer directly.

Appendix A: Trouble shooting guide

Q. What kind of camera should I buy for this DVR?

A. Any BNC or RCA interface indoor/outdoor/infrared camera will work with the DVR. It doesn't matter whether it's a color or black/white camera. However, web cameras that require a USB interface are not compatible with the DVR.

Q. What kind of alarm device should I buy for DVR?

A. Most sound alarms are compatible with our DVR.

Q. I can't turn on DVR.

A. Make sure that the power cord is plugged in correctly and the red power light on DVR front panel is on.

Q. I see nothing but a blue screen after I turn on DVR.

A. Check the camera input and video output connection on DVR back panel. If you can't find problem with these connections, check whether the camera power cable is firmly connected. Make sure the system format for NTSC and PAL is right.

Q. Can I prevent other people from stopping the recording while I am gone?

A. If the DVR is in schedule or recording mode, no one can change the set unless he has the right password.

Q. How can I erase all data on the hard disk drive?

A. Select "HDD Format Set" option in the menu.

Q. I forgot my password. What should I do?

A. Press the "1234" when entering password and it will reset DVR's password to factory default. Then the password will reset to factory default (0000).

Q. Can my desktop PC read the video data on hard disk drive in DVR?

A. Yes, you can use our software to read all video data on hard disk.

Q. What happens if I install my PC hard disk drive into the DVR?

A. You can use a PC hard disk drive in the DVR. However, once it runs in DVR, it will delete any PC operation system and files on the hard disk drive.

Q. What kind of hard disk drive should I purchase to make the DVR run?

A. Any PC compatible IDE, ATA hard disk drive will work.

Q. Does this DVR kit come with sensors, cameras, or hard disk drive?

A. No. You have to buy each accessory separately.

Q. What is the capacity to record?

A. Up to a year with two 120 GB HDD at the lowest quality setting when set at 1 frame per second.

Q. Does this DVR come with a remote control either hardwire or wireless?

A. Yes, there is a remote control come with the DVR.

Q. Why cannot I access Time/Date Set, HDD Format Set, Record Set menu?

A. Please stop record or play before you access these menu.

Q. Why cannot I access Network Set menu?

A. Please stop the connection of the PC View soft from Internet before you access Network Set menu.

Q. I push record button, but the DVR does not start recording, why?

A. Push display button to see if there is a hard disk detected, also if the DVR is in schedule mode (there is a “S” on the screen in yellow), you cannot start recording by push record button, you have to push schedule button again to cancel schedule mode.

Q. I push record button while recording, but the DVR does not stop recording, why?

A. If the DVR is recording in schedule mode (there is a “S” on screen), you cannot stop recording unless you quit schedule mode first. Push schedule button to cancel schedule mode.

Q. There is a movement, but the DVR does not start recording.

A. Make sure the motion enable of that channel is on, the area set is ok, the A/M rec time is not set to off, and the DVR is in schedule mode. Otherwise set the motion level to HIGH or VERY HIGH.

Q. When the network connection between DVR and client computer is cut off, why the DVR halts and clock stops?

A: In case network is cut off abnormally, DVR machine will halts for 20 seconds without response to any operation of pressing front panel buttons. 20 seconds later, it will restore normal state, but the icon that shows network status won't disappear in 10 minutes and in this period client computer cannot connect to the DVR or enter network menu.

Q. I push the menu button, but it do not display the password menu to enter menu, why?

A. To enter menu, you have to long press the “Menu/search” button, if you just push this button, you will see the search menu.

Q. I long press the “Menu/search” button, but it do not display password menu, and directly enter the menu, why do not I need a password?

A. If the password level setup in Password Setup is “NO USE”, you do not need a password to enter the menu, if you want to need a password when enter menu setup, just change the password level to “SETUP”.

Appendix B: record time in for 40G hard disk (hour)

Rec rate field/sec	Picture quality	Resolution	Recording time
50 fps	Very high	720	7.5 hours
50 fps	Low	720	20 hours
25 fps	Normal	360	24 hours
25 fps	Low	360	67 hours
1 fps	Normal	720	720 hours

Note: The above figures are from our test results. Just for users' reference. Different definition and stabilization (objects' movement) of the images will make some kind of different results.

Bit rate :

Quality	resolution	Bit rate
Low	360	10k
normal	360	13k
high	360	16k
Very high	360	20k
Low	720	9k
Normal	720	11k
high	720	17k
Very high	720	25k

Appendix C: Internet View/Playback Configurations

1. About Network

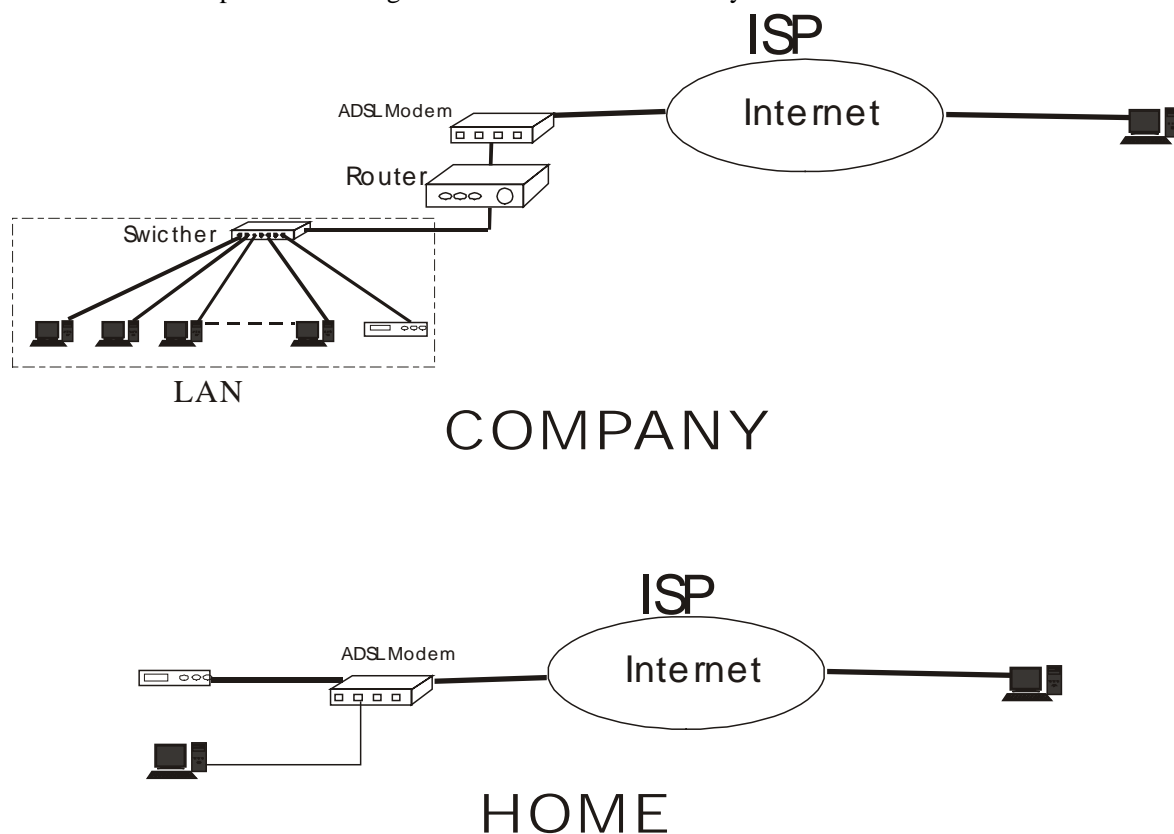
Users can select the following types of networks:

1): Local Area Network (LAN): telecom companies offer the Internet connection, e.g. optical fiber, and users of a community/building setup Internet server, then put cables into the end user's office/home through HUB.

2): ADSL: user applies for ADSL from Internet services supplier and get an ADSL MODEM, and then connect the computer to the ADSL MODEM, by inputting user name and password in the dialing software users can connect to Internet.

3): Close Circuit Television Broadband: users applies for CCTV connection from CCTV services supplier, and connect a computer to a CABLE MODEM to surf online.

4): In companies or Internet cafes, network administrators utilize routers or proxy server to connect all the computers to one Internet cable, and all the computers use the same Internet IP address. Most companies are using this kind of network nowadays.



2. Network Configurations

After connecting to Internet, our DVR card users should make the following configurations to make remote view/playback.

1): When in LAN, network administrators should open the following ports for specifics computers: 5000- 5002. Please make sure that the other services don't use the same ports.

- 2): In case users use ADSL network and the surveillance system computer connect to the ADSL MODEM, then the ports have all opened by default. If not, please close fire wall by guidance of the ADSL MODEM user’s manual.
- 3): In case connect to Internet by proxy server, users should utilize port mapping software and open ports 5000 –5002 for the surveillance computer.
- 4): In case users connect to Internet by router, then users should add the IP address of the surveillance computer and open the abovementioned ports in DMZ setup or Virtual Server setup (the names maybe different in different kind of routers) of the router.
- 5): For CABLE MODEM type and ADSL MODEM type, the configurations are some kind of the same:



As ADSL and CABLE MODEM network users usually use dynamic IP address, so once the MODEM restarts, the IP addresses will change. For this situation, users should apply for DNS services.